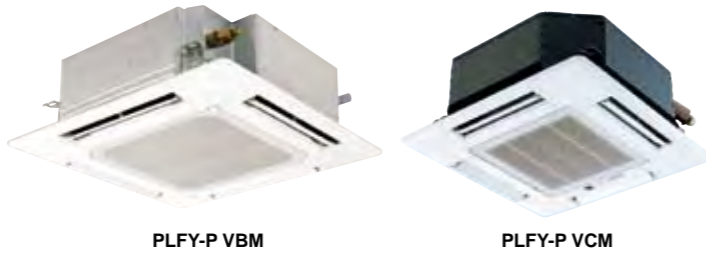


INDOOR UNIT Ceiling cassette type 4-way airflow

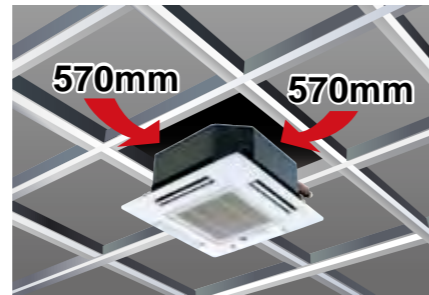
PLFY-P VBM-E *i-see Sensor*
PLFY-P VCM-E



The new 4-way cassette VBM offers 72 different airflow patterns, making it ideal for applications with ceilings up to 4.2 m (13-13/16ft) in height.



Compact body to match with 2 feet (600mm) x 2 feet (600mm) ceiling design (VCM)



Specifications

		PLFY-P32VBM-E	PLFY-P40VBM-E	PLFY-P50VBM-E	PLFY-P63VBM-E	PLFY-P80VBM-E	PLFY-P100VBM-E	PLFY-P125VBM-E
Power source		1-phase 220-240V 50Hz / 1-phase 200V 60Hz						
Cooling capacity	*1 kW	3.6	4.5	5.6	7.1	9.0	11.2	14.0
	*1 BTU/h	12,300	15,400	19,100	24,200	30,700	38,200	47,800
Heating capacity	*1 kW	4.0	5.0	6.3	8.0	10.0	12.5	16.0
	*1 BTU/h	13,600	17,100	21,500	27,300	34,100	42,700	54,600
Power consumption	Cooling kW	0.03	0.04	0.05	0.07	0.15	0.16	0.16
	Heating kW	0.02	0.03	0.04	0.06	0.14	0.15	0.15
Current	Cooling A	0.22	0.29	0.36	0.51	1.00	1.07	1.07
	Heating A	0.14	0.22	0.29	0.43	0.94	1.00	1.00
External finish (Munsell No.)	Unit	Galvanized steel sheet						
	Panel	White (6.4Y 8.9/0.4)						
Dimension H x W x D	Unit	258 x 840 x 840 (10-3/16 x 33-8/1 x 33-8/1)						
	Panel	298 x 840 x 840 (11-3/4 x 33-1/8 x 33-1/8)						
Net weight	Unit	35 x 950 x 950 (1-3/8 x 37-7/16 x 37-7/16)						
	Panel	22 (49)						
Heat exchanger	Unit	23 (51)						
	Panel	6 (13)						
Fan	Type x Quantity	Cross fin (Aluminum plate fin and copper tube)						
	Airflow rate (Lo-Mid1-Mid2-Hi)	Turbo fan x 1						
External static pressure	m³/min	11-12-13-14	12-13-14-16	14-15-16-18	16-18-20-22	21-24-27-29	22-25-28-30	22-25-28-30
	L/s	183-200-217-233	200-217-233-267	233-250-267-300	267-300-333-367	350-400-450-483	367-417-467-500	367-417-467-500
Motor	Type	0						
	Output	DC motor						
Air filter	Type	0.050						
	Output	0.120						
Refrigerant pipe diameter	Gas (Flare)	PP Honeycomb						
	Liquid (Flare)	ø12.7 (ø1/2)						
Field drain pipe diameter	mm(in.)	ø12.7 (ø1/2) / ø15.88 (ø5/8) (Compatible)						
	mm(in.)	ø15.88 (ø5/8)						
Sound pressure level (Lo-Mid1-Mid2-Hi) *2 *3	mm(in.)	ø15.88 (ø5/8) / ø19.05 (ø3/4) (Compatible)						
	mm(in.)	ø9.52 (ø3/8)						
Sound pressure level (Lo-Mid1-Mid2-Hi) *2 *3	mm(in.)	O.D. 32 (1-1/4)						
	mm(in.)	O.D. 32 (1-1/4)						
Sound pressure level (Lo-Mid1-Mid2-Hi) *2 *3	mm(in.)	27-28-29-31						
	mm(in.)	27-28-30-31						
Sound pressure level (Lo-Mid1-Mid2-Hi) *2 *3	mm(in.)	28-29-30-32						
	mm(in.)	30-32-35-37						
Sound pressure level (Lo-Mid1-Mid2-Hi) *2 *3	mm(in.)	34-37-39-41						
	mm(in.)	35-38-41-43						

Automatic Air Speed Adjustment

Auto-fan-speed mode enables speedy and comfortable heating during heating startup.

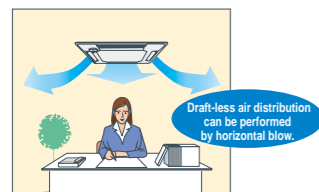
The Auto-fan-speed mode is added to the usual four steps "Low, Mid1, Mid2, High." The Auto-fan-speed mode enables speedy and comfortable air conditioning because the air flow speeds up when starting, and air flow slows down when the air conditioning becomes stable. (PLFY-P VBM-E ONLY)



* When using a wireless remote controller, initial settings are required.

Draft-less Air Distribution

The horizontal blow mode* newly employed supplies airflow horizontally not bringing cooled/warmed air directly to occupants thus preventing discomfort sensation due to excessive cooling or direct exposing of occupants to the air blow. (PLFY-P VBM-E ONLY)

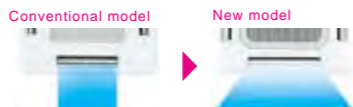


*Default
*The ceiling may be smudged at a spot where the supplied airflow is seriously disturbed.

Wide Air Flow (PLFY-P VBM-E ONLY)

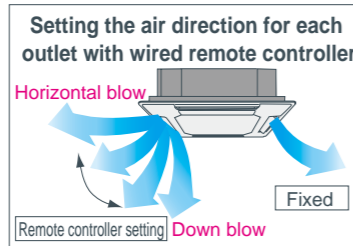
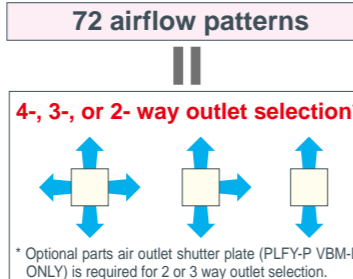
Cooling softly with Wide Air Flow

Discharge air reaches wider area and the fan speed is decreased by 20% thanks to the new wide shape air outlet.



72 patterns of airflow to accommodate any room layout are available. *First in the industry*

The number of outlet can be set to 4, 3, or 2. Flexible airflow is available by fixing the up-down airflow direction of the outlet with a wired remote controller (or manually).

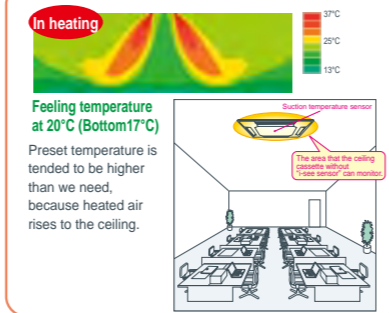


"i-see sensor" can be used with ceiling cassette type 4-way airflow unit. (Option PAC-SA1ME-E, PLY-VBM-E ONLY)

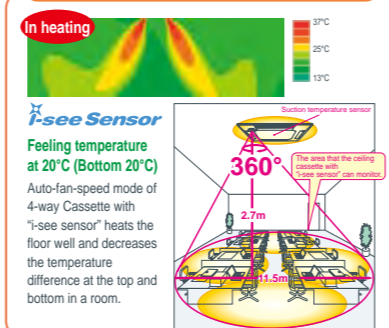
New 4-way Cassette PLY-VBM controls the temperature difference at the top and bottom in a room by checking the floor temperature with "i-see sensor". Comfortable air conditioning can be realized smoothly with "sensible temperature control." (Option PAC-SA1ME-E, PLY-VBM-E ONLY)

Prevents overcooling/overheating, and improves comfort/energy-efficiency

Without i-see sensor: preset temperature at 23°C



With i-see sensor+Auto fan speed: preset temperature at 20°C



		PLFY-P20VCM-E	PLFY-P25VCM-E	PLFY-P32VCM-E	PLFY-P40VCM-E
Power source		1-phase 220-240V 50Hz			
Cooling capacity	*1 kW	2.2	2.8	3.6	4.5
	*1 BTU/h	7,500	9,600	12,300	15,400
Heating capacity	*1 kW	2.5	3.2	4.0	5.0
	*1 BTU/h	8,500	10,900	13,600	17,100
Power consumption	Cooling kW	0.05	0.05	0.06	0.06
	Heating kW	0.05	0.05	0.06	0.06
Current	Cooling A	0.23	0.23	0.28	0.28
	Heating A	0.23	0.23	0.28	0.28
External finish (Munsell No.)	Unit	Galvanized steel sheet with gray heat insulation			
	Panel	White (6.4Y 8.9/0.4)			
Dimension H x W x D	Unit	208 x 570 x 570 (8-1/4 x 22-1/2 x 22-1/2)			
	Panel	20 x 650 x 650 (13/16 x 25-5/8 x 25-5/8)			
Net weight	Unit	15.5 (35)			
	Panel	3 (7)			
Heat exchanger	Unit	Cross fin (Aluminum plate fin and copper tube)			
	Panel	3 (7)			
Fan	Type x Quantity	Turbo fan x 1			
	Airflow rate (Lo-Mid-Hi)	Turbo fan x 1			
External static pressure	m³/min	8-9-10	8-9-10	8-9-11	8-9-11
	L/s	133-150-167	133-150-167	133-150-183	133-150-183
Motor	Type	0			
	Output	1-phase induction motor			
Air filter	Type	0.011			
	Output	0.015			
Refrigerant pipe diameter	Gas (Flare)	PP Honeycomb (long life type)			
	Liquid (Flare)	ø12.7 (ø1/2)			
Field drain pipe diameter	mm(in.)	ø6.35 (ø1/4)			
	mm(in.)	ø6.35 (ø1/4)			
Sound pressure level (Lo-Mid-Hi) *2 *3	mm(in.)	O.D. 32 (1-1/4)			
	mm(in.)	O.D. 32 (1-1/4)			
Sound pressure level (Lo-Mid-Hi) *2 *3	mm(in.)	28-31-35			
	mm(in.)	28-31-37			
Sound pressure level (Lo-Mid-Hi) *2 *3	mm(in.)	29-33-38			
	mm(in.)	30-34-39			

Notes:

- *1 Cooling/Heating capacity indicates the maximum value at operation under the following condition.
Cooling : Indoor 27°C(81°F)DB/19°C(66°F)WB, Outdoor 35°C(95°F)DB
Heating : Indoor 20°C(68°F)DB, Outdoor 7°C(45°F)DB/6°C(43°F)WB
- *2 Airflow rate/Sound pressure level are in (low-middle-high) or (low-middle1-middle2-high).
- *3 It is measured in anechoic room at power source 230V.

INDOOR UNIT

Ceiling cassette type

2-way airflow

PLFY-P VLMD-E

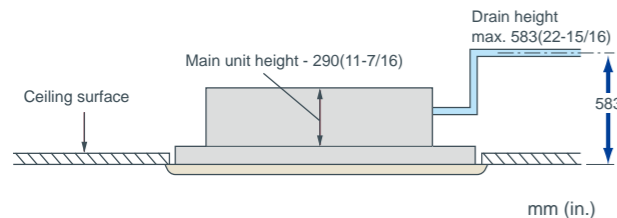


Slim body of 290mm(11-7/16in.) height



Equipped with drain pump mechanism as standard

The drain can be positioned anywhere up to 583mm(22-15/16in.) from the ceiling's surface, providing greater freedom with long cross-piping and allowing more versatility with piping layouts.



Compact unit and low noise level attained!

Sound pressure level table (Standard static pressure) at 0Pa

Sound pressure level	Fan Speed	Capacity	dB(A)									
			P20	P25	P32	P40	P50	P63	P80	P100	P125	
			High	33	36	37	39	39	42	46		
Mid	30	33	34	37	36	39	42/44					
Low	27	29	31	32	33	36	40					

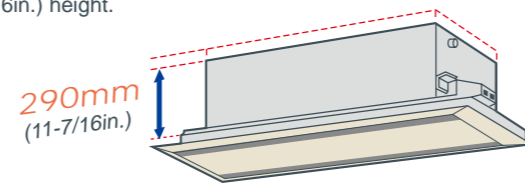
<220V,240V>

Sound pressure level	Fan Speed	Capacity	dB(A)									
			P20	P25	P32	P40	P50	P63	P80	P100	P125	
			High	34	37	38	40	40	43	46		
Mid	31	34	35	38	37	41	42/44					
Low	28	30	32	33	34	37	40					

<230V>

Slim body - only 290mm(11-7/16in.) height

The slimline body is highly suitable for installation in narrow ceiling spaces and for replacing obsolete air-conditioning equipment in older buildings. The main unit is only 290mm(11-7/16in.) height.



Terminal block on outside of main unit makes wiring easier

Fresh air directly taken in

Fresh air can be taken in to the main unit directly (optional accessories needed.)

Long life filter equipped as standard

The antibacterial long life filter does not require maintenance for approximately a year.

Easy installation

Lighter panel and placing the electric board near the panel make installation and maintenance easier. Also, the heat exchanger is washable by displacing the center panel, filter, and fan.

Specifications

		PLFY-P20VLMD-E	PLFY-P25VLMD-E	PLFY-P32VLMD-E	PLFY-P40VLMD-E	
Power source		1-phase 220-240V 50Hz / 1-phase 220-230V 60Hz				
Cooling capacity	*1 kW	2.2	2.8	3.6	4.5	
	*1 BTU/h	7,500	9,600	12,300	15,400	
Heating capacity	*1 kW	2.5	3.2	4.0	5.0	
	*1 BTU/h	8,500	10,900	13,600	17,100	
Power consumption	Cooling kW	0.072 / 0.075	0.072 / 0.075	0.072 / 0.075	0.081 / 0.085	
	Heating kW	0.065 / 0.069	0.065 / 0.069	0.065 / 0.069	0.074 / 0.079	
Current	Cooling A	0.36 / 0.37	0.36 / 0.37	0.36 / 0.37	0.40 / 0.42	
	Heating A	0.30 / 0.32	0.30 / 0.32	0.30 / 0.32	0.34 / 0.37	
External finish (Munsell No.)	Unit	Galvanized steel plate				
	Panel	Pure white (6.4Y 8.9/0.4)				
Dimension H x W x D	Unit mm (in.)	290 x 776 x 634 (11-7/16 x 30-9/16 x 25)				
	Panel mm (in.)	20 x 1080 x 710 (13/16 x 42-9/16 x 28)				
Net weight	Unit kg(lbs.)	23 (51)		24 (53)		
	Panel kg(lbs.)	6.5 (15)				
Heat exchanger		Cross fin				
Fan	Type x Quantity	Turbo fan x 1				
	Airflow rate *2 (Lo-Mid-Hi)	m³/min	6.5-8.0-9.5		7.0-8.5-10.5	
		L/s	108-133-158		117-142-175	
		cfm	230-283-335		247-300-371	
	External static pressure Pa	0				
Motor	Type	1-phase induction motor				
	Output kW	0.015 (at 240V)				
Air filter		PP honeycomb fabric (long life type)				
Refrigerant	Gas(Flare) mm(in.)	ø12.7 (ø1/2)				
pipe diameter	Liquid(Flare) mm(in.)	ø6.35 (ø1/4)				
Field drain pipe diameter	mm(in.)	O.D.32 (1-1/4)				
Sound pressure level (Lo-Mid-Hi) *2 *3	220V/240V dB(A)	27-30-33		29-33-36		
	230V dB(A)	28-31-34		30-34-37		

		PLFY-P50VLMD-E	PLFY-P63VLMD-E	PLFY-P80VLMD-E	PLFY-P100VLMD-E	PLFY-P125VLMD-E	
Power source		1-phase 220-240V 50Hz / 1-phase 220-230V 60Hz					
Cooling capacity	*1 kW	5.6	7.1	9.0	11.2	14.0	
	*1 BTU/h	19,100	24,200	30,700	38,200	47,800	
Heating capacity	*1 kW	6.3	8.0	10.0	12.5	16.0	
	*1 BTU/h	21,500	27,300	34,100	42,700	54,600	
Power consumption	Cooling kW	0.082 / 0.086	0.101 / 0.105	0.147 / 0.156	0.157 / 0.186	0.28 / 0.28	
	Heating kW	0.075 / 0.080	0.094 / 0.099	0.140 / 0.150	0.150 / 0.180	0.27 / 0.27	
Current	Cooling A	0.41 / 0.43	0.49 / 0.51	0.72 / 0.74	0.75 / 0.88	1.35 / 1.35	
	Heating A	0.35 / 0.38	0.43 / 0.46	0.66 / 0.69	0.69 / 0.83	1.33 / 1.33	
External finish (Munsell No.)	Unit	Galvanized steel plate					
	Panel	Pure white (6.4Y 8.9 / 0.4)					
Dimension H x W x D	Unit mm (in.)	290 x 946 x 634 (11-7/16 x 37-1/4 x 25)		290 x 1446 x 634 (11-7/16 x 56-15/16 x 25)		280 x 1708 x 606 (11-7/16 x 67-1/4 x 23-7/8)	
	Panel mm (in.)	20 x 1250 x 710 (13/16 x 49-1/4 x 28)		20 x 1750 x 710 (13/16 x 68-15/16 x 28)		20 x 2010 x 710 (13/16 x 79-3/16 x 28)	
Net weight	Unit kg(lbs.)	27 (60)	28 (62)	44 (98)	47 (104)	56 (124)	
	Panel kg(lbs.)	7.5 (17)		12.5 (28)		13.0 (29)	
Heat exchanger		Turbo fan x 1		Turbo fan x 2		Sirocco fan x 4	
Fan	Type x Quantity	Turbo fan x 1		Turbo fan x 2		Sirocco fan x 4	
	Airflow rate *2 (P50-P100:Lo-Mid-Hi) (P125:Lo-Mid2-Mid1-Hi)	m³/min	9.0-11.0-12.5	11.0-13.0-15.5	15.5-18.5-22.0	17.5-21.0-25.0	24.0-27.0-30.0-33.0
		L/s	150-183-208	167-217-258	258-308-367	292-350-417	400-450-500-550
		cfm	318-388-441	353-459-547	547-653-777	618-742-883	848-953-1,059-1,165
	External static pressure Pa	0					
Motor	Type	1-phase induction motor					
	Output kW	0.020 (at 240V)		0.020 (at 240V)	0.030 (at 240V)	0.078 x 2 (at 240V)	
Air filter		PP honeycomb fabric (long life type)				Synthetic fiber unwoven cloth filter (long life)	
Refrigerant pipe diameter	Gas (Flare) mm(in.)	ø12.7 (ø1/2)		ø15.88 (ø5/8)			
	Liquid (Flare) mm(in.)	ø6.35 (ø1/4)		ø9.52 (ø3/8)			
Field drain pipe diameter	mm(in.)	O.D.32 (1-1/4)					
Sound pressure level (Lo-Mid-Hi) *2 *3	220V/240V dB(A)	31-34-37	32-37-39	33-36-39	36-39-42	40-42-44-46	
	230V dB(A)	32-35-38	33-38-40	34-37-40	37-41-43	(Lo-Mid2-Mid1-Hi)	

Notes:

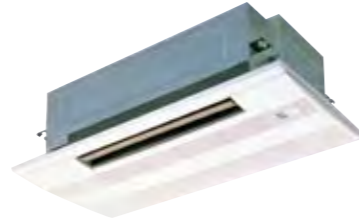
- *1 Cooling/Heating capacity indicates the maximum value at operation under the following condition.
Cooling : Indoor 27°C(81°F)DB/19°C(66°F)WB, Outdoor 35°C(95°F)DB
Heating : Indoor 20°C(68°F)DB, Outdoor 7°C(45°F)DB/6°C(43°F)WB
- *2 Airflow rate/Sound pressure level are in (low-middle-high) or (low-middle2-middle1-high).
- *3 It is measured in anechoic room.

INDOOR UNIT

Ceiling cassette type

1-way airflow

PMFY-P VBM-E



Compact and lightweight body perfect for limited ceiling space applications.



Compact size for smooth installation and maintenance

Unit body size has been standardized for all models at 812mm for easier installation. Body weight is only 14kg for the main unit and 3kg for the panel, making this unit one of the lightest in the industry.

Quiet operation

Newly developed airflow control technology reduces noise level to only 27dB (P20VBM) for industry-leading quiet performance.

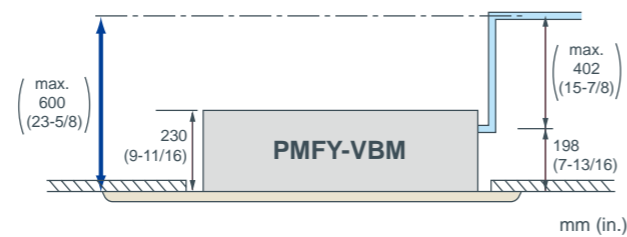
Sound pressure level table

Sound pressure level	Capacity				
	P20	P25	P32	P40	
Fan Speed	High	35	37	39	
	Mid 1	33	36	37	
	Mid 2	30	34	35	
	Low	27	32	33	

<220V,240V>

Drain pump

The drain can be positioned anywhere up to 600mm(23-5/8in.) from the ceiling's surface.



Specifications

		PMFY-P20VBM-E	PMFY-P25VBM-E	PMFY-P32VBM-E	PMFY-P40VBM-E
Power source		1-phase 220-240V 50Hz / 1-phase 220V 60Hz			
Cooling capacity	*1 kW	2.2	2.8	3.6	4.5
	*1 BTU/h	7,500	9,600	12,300	15,400
Heating capacity	*1 kW	2.5	3.2	4.0	5.0
	*1 BTU/h	8,500	10,900	13,600	17,100
Power consumption	Cooling kW	0.042	0.044		0.054
	Heating kW	0.042	0.044		0.054
Current	Cooling A	0.20	0.21		0.26
	Heating A	0.20	0.21		0.26
External finish (Munsell No.)		White (0.98Y 8.99/0.63)			
Dimension	Unit mm(in.)	230 x 812 x 395 (9-1/16 x 32 x 15-9/16)			
	H x W x D Panel mm(in.)	30 x 1000 x 470 (1-3/16 x 39-3/8 x 18-9/16)			
Net weight	Unit kg(lbs.)	14 (31)			
	Panel kg(lbs.)	3 (7)			
Heat exchanger		Cross fin (Aluminum plate fin and copper tube)			
Fan	Type	Line flow fan x 1			
	Airflow rate *2	m ³ /min	6.5-7.2-8.0-8.7	7.3-8.0-8.6-9.3	7.7-8.7-9.7-10.7
		L/s	108-120-133-145	122-133-143-155	128-145-162-178
	(Lo-Mid2-Mid1-Hi) cfm	230-254-283-307	258-283-304-328	272-307-343-378	
External static pressure	Pa	0			
Motor	Type	1-phase induction motor			
	Output kW	0.028			
Air filter		PP Honeycomb fabric			
Refrigerant pipe diameter	Gas(Flare) mm(in.)	ø12.7 (ø1/2)			
	Liquid(Flare) mm(in.)	ø6.35 (ø1/4)			
Field drain pipe diameter		mm(in.) O.D. 26 (1)			
Sound pressure level (Lo-Mid2-Mid1-Hi) *2 *3	dB(A)	27-30-33-35	32-34-36-37	33-35-37-39	

Notes:

- *1 Cooling/Heating capacity indicates the maximum value at operation under the following condition.
Cooling : Indoor 27°C(81°F)DB/19°C(66°F)WB, Outdoor 35°C(95°F)DB
Heating : Indoor 20°C(68°F)DB, Outdoor 7°C(45°F)DB/6°C(43°F)WB
- *2 Airflow rate/Sound pressure level are in (low-middle2-middle1-high).
- *3 It is measured in anechoic room.