

INDOOR UNIT

Floor standing exposed

PFFY-P VKM-E

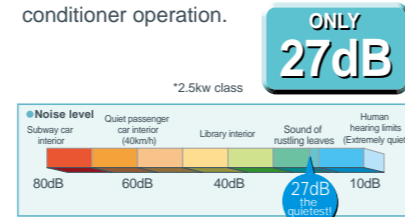


For living rooms, bed rooms, or offices where a sophisticated design is required. The latest Mitsubishi innovation – floor-standing air-conditioner sophisticated in design, rich in function.



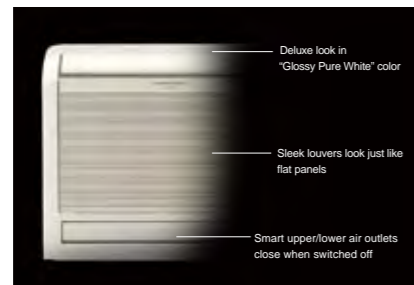
Quiet operation

Mitsubishi Electric air conditioners have always been some of the quietest models available in the market. Our new floor-standing models are no exception. It can create a silent and comfortable space where the occupants would not even recognize the existence of air conditioner operation.



Sophisticated Design

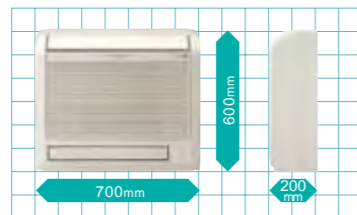
From Mitsubishi Electric, an innovative new floor-standing air-conditioner. Our pleasing mix of streamlined form and diversified function.



Engineered to keep room walls free, furnish comfy cooling in summer, toasty heating in winter. The "Glossy Pure White" colour ensures a deluxe look, the perfect match for any room. Both upper and lower air outlets remain closed when switched OFF, in a smart and striking image. A superb new air-conditioner from Mitsubishi, providing a handsome fit for your own distinctive interior.

Slim but Mighty

The unit body is slim and trim, the essence in compact. An ideal size for living rooms, bedrooms, and more. The removable and washable front panel makes cleaning a snap.



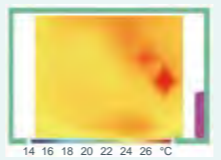
Easy and regular cleaning allows your air-conditioner stay beautiful while keeping its energy-efficient operation always possible.

Optimum Air Distribution

Comfy room temperatures are realized by the optimum, powerful and efficient air distribution through upper and lower air outlets. The upper vane angle is remote controllable, with 5 air flow direction levels (+Swing and Auto modes) and 4 wind power levels (+Auto mode). By setting the vane angle almost vertical, annoying direct wind can be avoided for your better comfort.



The air from both upper and lower air outlets is optimally controlled and distributed evenly to every corner of the room. In heating mode, the warm air is smartly controlled to stay at the floor level: Your feet do not feel chilled any more!



Specifications

		PFFY-P20VKM-E	PFFY-P25VKM-E	PFFY-P32VKM-E	PFFY-P40VKM-E	
Power source		1-phase 220-240V 50Hz				
Cooling capacity	*1 kW	2.2	2.8	3.6	4.5	
	*1 BTU/h	7,500	9,600	12,300	15,400	
Heating capacity	*1 kW	2.5	3.2	4.0	5.0	
	*1 BTU/h	8,500	10,900	13,600	17,100	
Power consumption	Cooling kW	0.025	0.025	0.025	0.028	
	Heating kW	0.025	0.025	0.025	0.028	
Current	Cooling A	0.20	0.20	0.20	0.24	
	Heating A	0.20	0.20	0.20	0.24	
External finish		Plastic (Pure white)				
Dimension		600 x 700 x 200				
H x W x D		23-5/8 x 27-9/16 x 7-7/8				
Net weight		15 (34)				
Heat exchanger		Cross fin (Aluminium plate fin and copper tube)				
Fan	Type x Quantity	Line flow fan x 2				
	Airflow rate (Lo-Mid-Hi-SH)	m ³ /min	5.9-6.8-7.6-8.7	6.1-7.0-8.0-9.1	6.1-7.0-8.0-9.1	8.0-9.0-9.5-10.7
	External static pressure	Pa	0			
Motor	Type	DC motor				
	Output	kW	0.03 x 2			
Air filter		PP honeycomb fabric (Catechin Filter)				
Refrigerant pipe diameter	Gas(Flare)	ø12.7 (ø1/2)				
	Liquid(Flare)	ø6.35 (ø1/4)				
Field drain pipe diameter		I.D.16 (5/8)				
Sound pressure level (Lo-Mid-Hi-SH)		*2 dB(A)	27-31-34-37	28-32-35-38	28-32-35-38	35-38-42-44

Notes:

*1 Cooling/heating capacity indicates the maximum value at operation under the following condition.
Cooling Indoor : 27°C(81°F)DB/19°C(66°F)WB, Outdoor : 35°C(95°F)DB
Heating Indoor : 20°C(68°F)DB, Outdoor : 7°C(45°F)DB/6°C(43°F)WB

*2 Airflow rate/Sound pressure level are in (low-middle-high-shigh).

*3 It is measured in anechoic room.

INDOOR UNIT

Floor standing exposed

PFFY-P VLEM-E



Floor mounted lowboy type effective in perimeter zone.



- Standardized design with mild lines.
- Supports various types of spaces from office buildings and shop buildings to hospitals.
- Water vapor permeable film humidifier can be installed.
- Remote controller can be installed onto the main unit.

Compact unit for easy air conditioning in perimeter zone.

The compact body of 220mm(8-11/16in.) in depth can be easily installed in the perimeter zone for effective air conditioning in the perimeter zone.

Electronics dry function dehumidify refreshingly.

Optimum dehumidification depending on indoor temperature to prevent over-cooling. Refreshing dehumidification can be attained.

Specifications

		PFFY-P20VLEM-E	PFFY-P25VLEM-E	PFFY-P32VLEM-E	PFFY-P40VLEM-E	PFFY-P50VLEM-E	PFFY-P63VLEM-E
Power source		1-phase 220-240V 50Hz / 1-phase 208-230V 60Hz					
Cooling capacity	*1 kW	2.2	2.8	3.6	4.5	5.6	7.1
	*1 BTU/h	7,500	9,600	12,300	15,400	19,100	24,200
Heating capacity	*1 kW	2.5	3.2	4.0	5.0	6.3	8.0
	*1 BTU/h	8,500	10,900	13,600	17,100	21,500	27,300
Power consumption	Cooling kW	0.04 / 0.06		0.06 / 0.07	0.065 / 0.075	0.085 / 0.09	0.1 / 0.11
	Heating kW	0.04 / 0.06		0.06 / 0.07	0.065 / 0.075	0.085 / 0.09	0.1 / 0.11
Current	Cooling A	0.19 / 0.25		0.29 / 0.30	0.32 / 0.33	0.40 / 0.41	0.46 / 0.47
	Heating A	0.19 / 0.25		0.29 / 0.30	0.32 / 0.33	0.40 / 0.41	0.46 / 0.47
External finish(Munsell No.)		Acrylic paint (5Y 8/1)					
Dimension H x W x D	mm	630 x 1,050 x 220		630 x 1,170 x 220		630 x 1,410 x 220	
	in.	24-13/16 x 41-3/8 x 8-11/16		24-13/16 x 46-1/8 x 8-11/16		24-13/16 x 55-9/16 x 8-11/16	
Net weight		23 (51)		25 (56)	26 (58)	30 (67)	32 (71)
Heat exchanger		Cross fin (Aluminum plate fin and copper tube)					
Fan	Type x Quantity	Sirocco fan x 1		Sirocco fan x 2			
	Airflow rate (Lo-Hi)	*2 m ³ /min	5.5-6.5	7.0-9.0	9.0-11.0	12.0-14.0	12.0-15.5
		L/s	92-108	117-150	150-183	200-233	200-258
	External static pressure	*2 cfm	194-230	247-318	318-388	424-494	424-547
		Pa	0				
Motor	Type	1-phase induction motor					
	Output	0.015		0.018	0.030	0.035	0.050
Air filter		PP Honeycomb fabric (washable)					
Refrigerant pipe diameter	Gas (Flare)	ø12.7 (ø1/2)					ø15.88 (ø5/8)
	Liquid (Flare)	ø6.35 (ø1/4)					ø9.52 (ø3/8)
Field drain pipe diameter		I.D.26 (1) <Accessory hose O.D.27 (1-3/32) (top end :20 (13/16))>					
Sound pressure level (Lo-Hi)		*2 *3 *4	34-40	35-40	38-43	40-46	

Notes:

- *1 Cooling/Heating capacity indicates the maximum value at operation under the following condition.
Cooling Indoor : 27°C(81°F)DB/19°C(66°F)WB, Outdoor 35°C(95°F)DB
Heating Indoor : 20°C(68°F)DB, Outdoor 7°C(45°F)DB/6°C(43°F)WB
- *2 Air flow rate/Sound pressure level are in (Low-High)
- *3 Measured point : 1m x 1m, Power supply : AC240V/50Hz
· 1dB(A) lower at AC230V/50Hz
· 2dB(A) lower at AC220V/50Hz
· 3dB(A) lower at 1.5m x 1.5m point
- *4 It is measured in anechoic room.

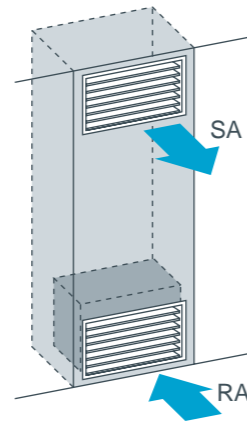
INDOOR UNIT

Floor mounted concealed type

PFFY-P VLRM-E
PFFY-P VLRMM-E



Neatly installed with pericover concealed.
Easy installation in perimeter zone.



installation image
(PFFY-P VLRMM-E)

Compact unit for easy air conditioning in perimeter zone.

The body is concealed in the pericover to pursue harmony with the interior.
The compact body of 220mm(8-11/16in.) in depth can be easily installed in the perimeter zone.

Electronics dry function dehumidify refreshingly to prevent over-cooling.

Optimum dehumidification depending on indoor temperature to prevent over-cooling.
Refreshing dehumidification can be attained.

Maximum external static pressure 60Pa (VLRMM model)

The additional external static pressure capacity provides flexibility for duct extension, branching, and air outlet configuration.

Specifications

		PFFY-P20VLRM-E	PFFY-P25VLRM-E	PFFY-P32VLRM-E	PFFY-P40VLRM-E	PFFY-P50VLRM-E	PFFY-P63VLRM-E
Power source		1-phase 220-240V 50Hz / 1-phase 208-230V 60Hz					
Cooling capacity	*1 kW	2.2	2.8	3.6	4.5	5.6	7.1
	*1 BTU/h	7,500	9,600	12,300	15,400	19,100	24,200
Heating capacity	*1 kW	2.5	3.2	4.0	5.0	6.3	8.0
	*1 BTU/h	8,500	10,900	13,600	17,100	21,500	27,300
Power consumption	Cooling kW	0.04 / 0.06		0.06 / 0.07	0.065 / 0.075	0.085 / 0.09	0.1 / 0.11
	Heating kW	0.04 / 0.06		0.06 / 0.07	0.065 / 0.075	0.085 / 0.09	0.1 / 0.11
Current	Cooling A	0.19 / 0.25		0.29 / 0.30	0.32 / 0.33	0.40 / 0.41	0.46 / 0.47
	Heating A	0.19 / 0.25		0.29 / 0.30	0.32 / 0.33	0.40 / 0.41	0.46 / 0.47
External finish(Munsell No.)		Galvanized steel plate					
Dimension H x W x D	mm	639 x 886 x 220		639 x 1,006 x 220		639 x 1,246 x 220	
	in.	25-3/16 x 34-15/16 x 8-11/16		25-3/16 x 39-5/8 x 8-11/16		25-3/16 x 49-1/16 x 8-11/16	
Net weight		kg(lbs.) 18.5 (41)		20 (45)	21 (47)	25 (56)	27 (60)
Heat exchanger		Cross fin (Aluminum plate fin and copper tube)					
Fan	Type x Quaity	Sirocco fan x 1			Sirocco fan x 2		
	Airflow rate (Lo-Hi)	*2 m ³ /min	5.5-6.5	7.0-9.0	9.0-11.0	12.0-14.0	12.0-15.5
		L/s	92-108	117-150	150-183	200-233	200-258
		cfm	194-230	247-318	318-388	424-494	424-547
External static pressure		Pa 0					
Motor	Type	1-phase induction motor					
	Output	kW 0.015		0.018	0.030	0.035	0.050
Air filter		PP Honeycomb fabric (washable)					
Refrigerant pipe diameter	Gas (Flare) mm(in.)	ø12.7 (ø1/2)					ø15.88 (ø5/8)
	Liquid (Flare) mm(in.)	ø6.35 (ø1/4)					ø9.52 (ø3/8)
Field drain pipe diameter		mm(in.) I.D.26 (1) <Accessory hose O.D.27 (1-3/32) (top end :20 (13/16))>					
Sound pressure level (Lo-Hi) *2 *3 *4		dB(A) 34-40		35-40	38-43	40-46	

Notes:

- *1 Cooling/Heating capacity indicates the maximum value at operation under the following condition.
Cooling Indoor : 27°C(81°F)DB/19°C(66°F)WB, Outdoor 35°C(95°F)DB
Heating Indoor : 20°C(68°F)DB, Outdoor 7°C(45°F)DB/6°C(43°F)WB
- *2 Air flow rate/Sound pressure level are in (Low-High)
- *3 Measured point : 1m x 1m, Power supply : AC240V/50Hz
· 1dB(A) lower at AC230V/50Hz
· 2dB(A) lower at AC220V/50Hz
· 3dB(A) lower at 1.5m x 1.5m point
- *4 It is measured in anechoic room.

		PFFY-P20VLRMM-E	PFFY-P25VLRMM-E	PFFY-P32VLRMM-E	PFFY-P40VLRMM-E	PFFY-P50VLRMM-E	PFFY-P63VLRMM-E
Power source		1-phase 220-240V 50Hz / 1-phase 220-240V 60Hz					
Cooling capacity	*1 kW	2.2	2.8	3.6	4.5	5.6	7.1
	*1 BTU/h	7,500	9,600	12,300	15,400	19,100	24,200
Heating capacity	*1 kW	2.5	3.2	4.0	5.0	6.3	8.0
	*1 BTU/h	8,500	10,900	13,600	17,100	21,500	27,300
Power consumption	Cooling kW	0.04		0.04	0.05	0.05	0.07
	Heating kW	0.04		0.04	0.05	0.05	0.07
Current	Cooling A	0.34		0.38	0.43	0.48	0.59
	Heating A	0.34		0.38	0.43	0.48	0.59
External finish(Munsell No.)		Galvanized steel plate					
Dimension H x W x D	mm	639 x 886 x 220		639 x 1,006 x 220		639 x 1,246 x 220	
	in.	25-3/16 x 34-15/16 x 8-11/16		25-3/16 x 39-5/8 x 8-11/16		25-3/16 x 49-1/16 x 8-11/16	
Net weight		kg(lbs.) 18.5 (41)		20 (45)	21 (47)	25 (56)	27 (60)
Heat exchanger		Cross fin (Aluminum plate fin and copper tube)					
Fan	Type x Quaity	Sirocco fan x 1			Sirocco fan x 2		
	Airflow rate (Lo-Mid-Hi)	m ³ /min	4.5-5.5-6.5	6.5-7.5-9.0	8.0-9.5-11.0	10.0-12.0-14.0	11.0-13.0-15.5
		L/s	75-92-108	108-125-150	133-158-183	167-200-233	183-217-258
		cfm	159-194-230	230-265-318	282-335-388	353-424-494	388-459-547
External static pressure *2		Pa 20/40/60					
Motor	Type	DC motor					
	Output	kW 0.096					
Air filter		PP Honeycomb fabric (washable)					
Refrigerant pipe diameter	Gas mm(in.)	ø12.7 (ø1/2) Brazed					ø15.88 (ø5/8) Brazed
	Liquid mm(in.)	ø6.35 (ø1/4) Brazed					ø9.52 (ø3/8) Brazed
Field drain pipe diameter		mm(in.) I.D.26 (1) <Accessory hose O.D.27 (1-3/32) (top end :20 (13/16))>					
Sound pressure level (Lo-Mid-Hi)	20Pa	dB(A) 31-36-40		27-32-37	30-36-40	32-37-41	35-40-44
	40Pa	dB(A) 34-39-42		30-35-41	32-38-42	35-40-44	36-42-47
	60Pa	dB(A) 35-40-43		32-37-42	35-39-44	36-41-45	38-43-48

Notes:

- *1 Cooling/Heating capacity indicates the maximum value at operation under the following condition.
Cooling Indoor : 27°C(81°F)DB/19°C(66°F)WB, Outdoor 35°C(95°F)DB
Heating Indoor : 20°C(68°F)DB, Outdoor 7°C(45°F)DB/6°C(43°F)WB
pipe length : 7.5m(24-9/16ft) Height difference : 0m(0ft)
- *2 The external static pressure is set to 20Pa at factory shipment.
- *3 The sound pressure level in operation is measured at 1m apart from the front side and the bottom side of the unit in anechoic room.
(Noise meter A-scale value) Connect the duct of 1m in length to the air outlet.