

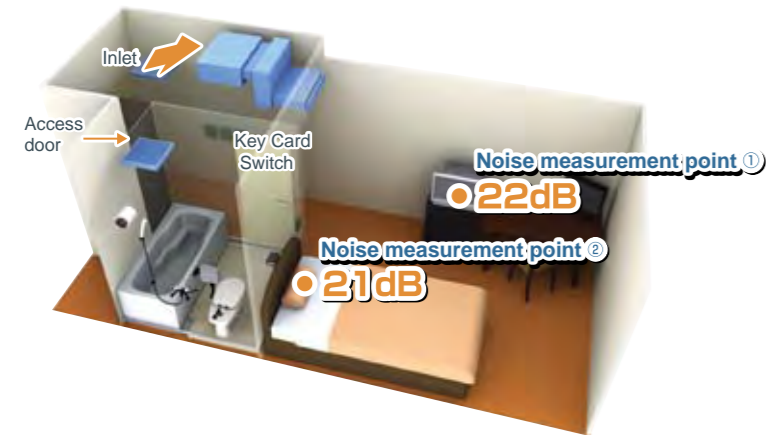
INDOOR UNIT

Ceiling concealed type

PEFY-P VMR-E-L/R

Static Pressure 5Pa	Width 640mm 25-6/32in.	Ultra Low Noise	Piping connection L model R model
-------------------------------	-------------------------------------	--------------------	-----------------------------------------

Problem solver for residential hotels, museums, libraries, or hospitals where low noise is especially a must!



Operable by key card switch

It is possible to operate / stop by taking a key card in and out.

Enables to install for symmetric design room

Left or right piping and control boxes are available depending on the layout of each room. Plus, as in the above figure, easy maintenance is possible from the access door in the bathroom. *Seen from the front, the pipe and control box are on the right side for -R models.

Easy Maintenance

Drain pan and heat exchangers are washable from the access door in the bathroom, making maintenance easy and cost saving.



Ultra low noise

Quiet indoor environment can be achieved with 21dB around the bed and 22dB around the desk. *The noise level may differ by the room size or the setting of the unit.

Energy saving

Energy saving can be realized by preventing us from failing to switch off of the air conditioners with a centralized system when no one is in the room. Note: Compact and simple controllers, designed specifically to control only start/stop, fan speed and temperature can be set in each room for the occupants' enhanced individual comfort.

Specifications

		PEFY-P20VMR-E-L	PEFY-P25VMR-E-L	PEFY-P32VMR-E-L
Power source		1-phase 220-230-240V 50Hz / 1-phase 220-230V 60Hz		
Cooling capacity	*1 kW	2.2	2.8	3.6
	*1 BTU/h	7,500	9,600	12,300
Heating capacity	*1 kW	2.5	3.2	4.0
	*1 BTU/h	8,500	10,900	13,600
Power consumption	Cooling kW	0.06 / 0.06	0.06 / 0.06	0.07 / 0.08
	Heating kW	0.06 / 0.06	0.06 / 0.06	0.07 / 0.08
Current	Cooling A	0.29 / 0.29	0.29 / 0.29	0.34 / 0.38
	Heating A	0.29 / 0.29	0.29 / 0.29	0.34 / 0.38
External finish		Galvanized		
Dimension H x W x D	Rear inlet mm (in.)	292 x 640 x 580 (11-1/2 x 25-1/4 x 22-7/8)		
	Bottom inlet mm (in.)	300 x 640 x 570 (11-7/8 x 25-1/4 x 22-1/2)		
Net weight		18 (40)		
Heat exchanger		Cross fin (Aluminum fin and copper tube)		
Fan	Type x Quantity	Sirocco fan x 1		
	Airflow rate (Lo-Mid-Hi)	m ³ /min	4.8-5.8-7.9	4.8-5.8-9.3
		L/s	80-97-132	80-97-155
		cfm	170-205-279	170-205-328
External static pressure *2	Pa	5		
Motor		1-phase induction motor		
Output		kW	0.018	0.023
Air filter		PP Honeycomb fabric (washable)		
Refrigerant	Gas	mm(in.)	ø12.7 (ø1/2) Brazed	
pipe diameter	Liquid	mm(in.)	ø6.35 (ø1/4) Brazed	
Field drain pipe diameter		mm(in.)	O.D. 26 (1)	
Sound pressure level (Lo-Mid-Hi) *3	220V	dB(A)	20-25-30	20-25-33
	230V		21-26-32	21-26-35
	240V		22-27-30	22-27-33

		PEFY-P20VMR-E-R	PEFY-P25VMR-E-R	PEFY-P32VMR-E-R
Power source		1-phase 220-230-240V 50Hz / 1-phase 220-230V 60Hz		
Cooling capacity	*1 kW	2.2	2.8	3.6
	*1 BTU/h	7,500	9,600	12,300
Heating capacity	*1 kW	2.5	3.2	4.0
	*1 BTU/h	8,500	10,900	13,600
Power consumption	Cooling kW	0.06 / 0.06	0.06 / 0.06	0.07 / 0.08
	Heating kW	0.06 / 0.06	0.06 / 0.06	0.07 / 0.08
Current	Cooling A	0.29 / 0.29	0.29 / 0.29	0.34 / 0.38
	Heating A	0.29 / 0.29	0.29 / 0.29	0.34 / 0.38
External finish		Galvanized		
Dimension H x W x D	Rear inlet mm (in.)	292 x 640 x 580 (11-1/2 x 25-1/4 x 22-7/8)		
	Bottom inlet mm (in.)	300 x 640 x 570 (11-7/8 x 25-1/4 x 22-1/2)		
Net weight		18 (40)		
Heat exchanger		Cross fin (Aluminum fin and copper tube)		
Fan	Type x Quantity	Sirocco fan x 1		
	Airflow rate (Lo-Mid-Hi)	m ³ /min	4.8-5.8-7.9	4.8-5.8-9.3
		L/s	80-97-132	80-97-155
		cfm	170-205-279	170-205-328
External static pressure *2	Pa	5		
Motor		1-phase induction motor		
Output		kW	0.018	0.023
Air filter		PP Honeycomb fabric (washable)		
Refrigerant	Gas	mm(in.)	ø12.7 (ø1/2) Brazed	
pipe diameter	Liquid	mm(in.)	ø6.35 (ø1/4) Brazed	
Field drain pipe diameter		mm(in.)	O.D. 26(1)	
Sound pressure level (Lo-Mid-Hi) *3	220V	dB(A)	20-25-30	20-25-33
	230V		21-26-32	21-26-35
	240V		22-27-30	22-27-33

Notes:

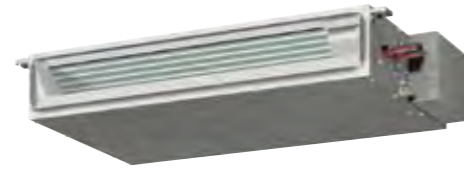
*1 Cooling/Heating capacity indicates the maximum value at operation under the following condition.
Cooling : Indoor 27°C (81°F) DB/19°C (66°F) WB, Outdoor 35°C (95°F) DB
Heating : Indoor 20°C (68°F) DB, Outdoor 7°C (45°F) DB/6°C (43°F) WB

*2 The external static pressure is set to 5Pa (at 220V, 230V, 240V).

*3 Measured in anechoic room. Sound pressure levels of the unit with a rear air inlet. (Sound pressure levels are higher than the unit with a bottom air inlet.)

INDOOR UNIT

Ceiling concealed type



PEFY-P VMS1(L)-E

Static Pressure 5~50Pa	Height 200mm 7-28/32in.	Low Noise	Width 790mm 31-1/8in.	Width 990mm 39in.	Width 1,190mm 46-7/8in.
----------------------------------	--------------------------------------	------------------	------------------------------------	--------------------------------	--------------------------------------

The ultra thin unit of 200mm offers increased flexibility, and is particularly suitable for places where low noise operation is desired from a slim line body.



Changeable static pressure

The unit is made suitable for a variety of applications with its four static pressure settings of 5, 15, 35, 50Pa.

Changeable airflow rate

Low, middle, and high fan speed settings deliver precise comfort.

Choice for drain pump

Drain pump is an optional part for the VMS1L, and a standard for VMS1.

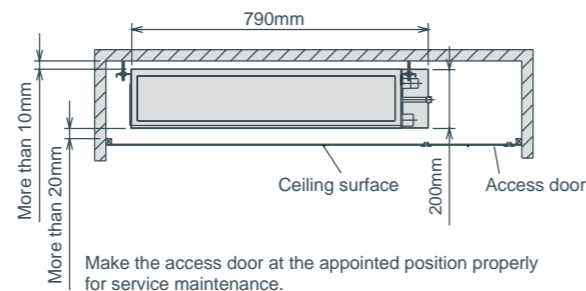
*For places where low noise operation is especially required (i.e. Hotels), VMS1L (without drain pump) is recommended.

PP Honeycomb fabric

Washable PP Honeycomb fabric filter as standard

Ultra low height unit with 200mm (7-28/32in.) high Ultra-narrow width of 790mm (P15-P32 models) [990mm for P40,50 models / 1190mm for P63 models]

Can be installed easily in tight spaces, such as ceiling cavities or drop-ceilings.



Reduced noise thanks to the use of newly designed centrifugal fan and coil

Sound pressure level table (Standard static pressure) at 15Pa

Sound pressure Level	Capacity	dB(A)							
		P15	P20	P25	P32	P40	P50	P63	
		High	28	29	30	32	33	35	36
Fan Speed	Mid	24	25	26	27	30	32	33	
	Low	22	23	24	24	28	30	30	

Specifications

		PEFY-P15VMS1(L)-E *	PEFY-P20VMS1(L)-E	PEFY-P25VMS1(L)-E	PEFY-P32VMS1(L)-E	PEFY-P40VMS1(L)-E	PEFY-P50VMS1(L)-E	PEFY-P63VMS1(L)-E		
Power source		1-phase 220-240V 50Hz / 1-phase 220-240V 60Hz								
Cooling capacity	*1 kW	1.7	2.2	2.8	3.6	4.5	5.6	7.1		
	*1 BTU/h	5,800	7,500	9,600	12,300	15,400	19,100	24,200		
Heating capacity	*1 kW	1.9	2.5	3.2	4.0	5.0	6.3	8.0		
	*1 BTU/h	6,500	8,500	10,900	13,600	17,100	21,500	27,300		
Power consumption	*3 Cooling kW	0.05 [0.03]	0.05 [0.03]	0.06 [0.04]	0.07 [0.05]	0.07 [0.05]	0.09 [0.07]	0.09 [0.07]		
	*3 Heating kW	0.03 [0.03]	0.03 [0.03]	0.04 [0.04]	0.05 [0.05]	0.05 [0.05]	0.07 [0.07]	0.07 [0.07]		
Current	*3 Cooling A	0.42 [0.31]	0.47 [0.36]	0.50 [0.39]	0.50 [0.39]	0.56 [0.45]	0.67 [0.56]	0.72 [0.61]		
	*3 Heating A	0.31 [0.31]	0.36 [0.36]	0.39 [0.39]	0.39 [0.39]	0.45 [0.45]	0.56 [0.56]	0.61 [0.61]		
External finish		Galvanized								
Dimension		mm			200 x 790 x 700			200 x 990 x 700		
H x W x D		In.			7-7/8 x 31-1/8 x 27-9/16			7-7/8 x 39 x 27-9/16		
Net weight		*3 kg(lbs.)			19(42) [18(40)]			20(45) [19(42)]		
Heat exchanger		Cross fin (Aluminium fin and copper tube)								
Fan	Type x Quantity	Sirocco fan x 2			Sirocco fan x 3			Sirocco fan x 4		
	Airflow rate (Lo-Mid-Hi)	m ³ /min	5-6-7	5.5-6.5-8	5.5-7-9	6-8-10	8-9.5-11	9.5-11-13	12-14-16.5	
		L/s	83-100-117	91-108-133	91-117-150	100-133-167	133-158-183	158-183-217	200-233-275	
	External static press	Pa	176-212-247	194-229-282	194-247-317	212-282-353	282-335-388	335-388-459	424-494-583	
Motor	type	DC motor								
output	kW	0.096								
Air filter		PP Honeycomb fabric (washable)								
Refrigerant pipe diameter	Gas	mm(in.)						ø12.7 (ø1/2) Brazed		
	Liquid	mm(in.)						ø6.35 (ø1/4) Brazed		
Field drain pipe diameter		mm(in.)								
Sound pressure level (Lo-Mid-Hi) (measured in anechoic room)		dB<A>		22-24-28	23-25-29	24-26-30	24-27-32	28-30-33	30-32-35	30-33-36

★PEFY-P15VMS1(L)-E can only be connected to YHM and YJM outdoor units.

	PEFY-P15VMS1(L)-E
PURY-P YHM, YJM	○
PUHY-P YHM, YJM	○
PUMY-P VHMA / VHMB	○
PUMY-P YHMA / YHMB	○
PQRY-P YGM	×
PQHY-P YGM	×
PQRY-P YHM	○
PQHY-P YHM	○

Notes:

*1 Cooling/Heating capacity indicates the maximum value at operation under the following condition.
Cooling : Indoor : 27°CDB./19°CWB. (81°FDB. / 66°FWB.) Outdoor : 35°CDB. (95°FDB.)
Heating : Indoor : 20°CDB. (68°FDB.) Outdoor : 7°CDB. / 6°CWB. (45°FDB. / 43°FWB.)
Pipe length : 7.5m (24-9/16ft) Height difference : 0m (0ft)

*2 The external static pressure is set to 15 Pa at factory shipment.

*3 [] is in case of PEFY-P15-63VMS1L-E

INDOOR UNIT Ceiling Concealed Type

PEFY-P VMA(L)-E

Middle Static Pressure
35~150Pa

Slim Body
Height 250mm

With precise control of indoor temperature while operating with optimum energy usage, it offers a high-energy saving efficiency.



Compact Indoor Units

For all models, unit height are unified to 250mm. Compared to the previous model, the height size is reduced, allowing installation in tight spaces, such as ceiling cavities or drop-ceilings.



Reduction in height size

PEFY-P VMA(L)	20	25	32	40	50	63	71	80	100	125	140
Height mm									250		
Width mm		700		900		1,100		1,400		1,600	
Depth mm								732			

External static pressure

Five-stage external static pressure settings provide flexibility for duct extension, branching and air outlet configuration and are adjustable to meet different application conditions. Setting ranges to a maximum of 150Pa.

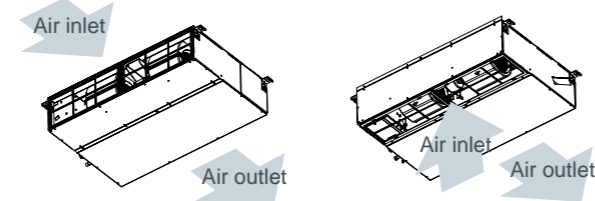
External static pressure setting

Series	20	25	32	40	50	63	71	80	100	125	140
PEFY-P VMA(L)											35/50/70/100/150Pa



Air Inlet

- (1) Rear inlet
- (2) Bottom inlet



Drain Pump Option

The line-up consists of two types, models with or without a built-in drain pump allowing more freedom in piping layout design.



PEFY-P VMA-E Drain pump built-in



PEFY-P VMAL-E No Drain pump

* Units with a "L" at the end of the model name are not equipped with a drain pump.

Analogue input

Analogue input allows unit to control the fan speed setting in conjunction with damper condition.

IT terminal

IT terminal is available. For details, contact your local distributor.

Specifications

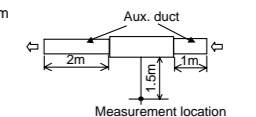
		PEFY-P20VMA(L)-E	PEFY-P25VMA(L)-E	PEFY-P32VMA(L)-E	PEFY-P40VMA(L)-E	PEFY-P50VMA(L)-E	
Power source		1-phase 220-230-240V 50 / 60Hz					
Cooling capacity (Nominal) *1	kW	2.2	2.8	3.6	4.5	5.6	
	BTU/h	7,500	9,600	12,300	15,400	19,100	
Heating capacity (Nominal) *2	kW	2.5	3.2	4.0	5.0	6.3	
	BTU/h	8,500	10,900	13,600	17,100	21,500	
Power consumption	Cooling *3 kW	0.06 [0.04]	0.06 [0.04]	0.07 [0.05]	0.09 [0.07]	0.11 [0.09]	
	Heating *3 kW	0.04	0.04	0.05	0.07	0.09	
Current	Cooling *3 A	0.53 [0.42]	0.53 [0.42]	0.55 [0.44]	0.64 [0.53]	0.74 [0.63]	
	Heating *3 A	0.42	0.42	0.44	0.53	0.63	
External finish		Galvanized steel plate					
Dimension H x W x D	mm	250 x 700 x 732	250 x 700 x 732	250 x 700 x 732	250 x 900 x 732	250 x 900 x 732	
	in.	9-7/8 x 27-9/16 x 28-7/8	9-7/8 x 27-9/16 x 28-7/8	9-7/8 x 27-9/16 x 28-7/8	9-7/8 x 35-7/16 x 28-7/8	9-7/8 x 35-7/16 x 28-7/8	
Net weight		kg(lbs)	23 (51) [22 (49)]	23 (51) [22 (49)]	23 (51) [22 (49)]	26 (58) [25 (56)]	
Heat exchanger		Cross fin (Aluminum fin and copper tube)					
Fan	Type x Quantity		Sirocco fan x 1				
	Airflow rate (Low-Mid-High)	m ³ /min	6.0 - 7.5 - 8.5	6.0 - 7.5 - 8.5	7.5 - 9.0 - 10.5	10.0 - 12.0 - 14.0	12.0 - 14.5 - 17.0
		L/s	100 - 125 - 142	100 - 125 - 142	125 - 150 - 175	167 - 200 - 233	200 - 242 - 283
		cfm	212 - 265 - 300	212 - 265 - 300	265 - 318 - 371	353 - 424 - 494	424 - 512 - 600
External static pressure *4	Pa	<35> - 50 - <70> - <100> - <150>	<35> - 50 - <70> - <100> - <150>	<35> - 50 - <70> - <100> - <150>	<35> - 50 - <70> - <100> - <150>	<35> - 50 - <70> - <100> - <150>	
Motor	Type	DC motor					
	Output kW	0.085	0.085	0.085	0.085	0.085	
Air filter		PP honeycomb fabric.					
Refrigerant pipe diameter	Liquid (R410A) (R22,R407C) mm(in.)	6.35 (1/4) Brazed	6.35 (1/4) Brazed	6.35 (1/4) Brazed	6.35 (1/4) Brazed	6.35 (1/4) Brazed	
	Gas (R410A) (R22,R407C) mm(in.)	12.7 (1/2) Brazed	12.7 (1/2) Brazed	12.7 (1/2) Brazed	12.7 (1/2) Brazed	12.7 (1/2) Brazed	
Field drain pipe diameter		mm(in.)	O.D.32 (1-1/4)	O.D.32(1-1/4)	O.D.32(1-1/4)	O.D.32 (1-1/4)	
Sound pressure level (measured in anechoic room)							
(Low-Mid-High) *3	*5	dB(A)	26-28-29	26-28-29	28-30-34	28-30-34	
	*6	dB(A)	23-25-26	23-25-26	23-26-29	23-27-30	

		PEFY-P63VMA(L)-E	PEFY-P71VMA(L)-E	PEFY-P80VMA(L)-E	PEFY-P100VMA(L)-E	PEFY-P125VMA(L)-E	PEFY-P140VMA(L)-E	
Power source		1-phase 220-230-240V 50 / 60Hz						
Cooling capacity (Nominal) *1	kW	7.1	8.0	9.0	11.2	14.0	16.0	
	BTU/h	24,200	27,300	30,700	38,200	47,800	54,600	
Heating capacity (Nominal) *2	kW	8.0	9.0	10.0	12.5	16.0	18.0	
	BTU/h	27,300	30,700	34,100	42,700	54,600	61,400	
Power consumption	Cooling *3 kW	0.12 [0.10]	0.14 [0.12]	0.14 [0.12]	0.24 [0.22]	0.34 [0.32]	0.36 [0.34]	
	Heating *3 kW	0.10	0.12	0.12	0.22	0.32	0.34	
Current	Cooling *3 A	1.01 [0.90]	1.15 [1.04]	1.15 [1.04]	1.47 [1.36]	2.05 [1.94]	2.21 [2.10]	
	Heating *3 A	0.90	1.04	1.04	1.36	1.94	2.10	
External finish		Galvanized steel plate						
Dimension H x W x D	mm	250 x 1,100 x 732	250 x 1,100 x 732	250 x 1,100 x 732	250 x 1,400 x 732	250 x 1,400 x 732	250 x 1,600 x 732	
	in.	9-7/8 x 43-5/16 x 28-7/8	9-7/8 x 43-5/16 x 28-7/8	9-7/8 x 43-5/16 x 28-7/8	9-7/8 x 55-1/8 x 28-7/8	9-7/8 x 55-1/8 x 28-7/8	9-7/8 x 63 x 28-7/8	
Net weight		kg(lbs)	32 (71) [31(69)]	32 (71) [31 (69)]	32 (71) [31 (69)]	42 (93) [41 (91)]	42 (93) [41 (91)]	
Heat exchanger		Cross fin (Aluminum fin and copper tube)						
Fan	Type x Quantity		Sirocco fan x 2					
	Airflow rate (Low-Mid-High)	m ³ /min	13.5 - 16.0 - 19.0	14.5 - 18.0 - 21.0	14.5 - 18.0 - 21.0	23.0 - 28.0 - 33.0	28.0 - 34.0 - 40.0	29.5 - 35.5 - 42.0
		L/s	225 - 267 - 317	242 - 300 - 350	242 - 300 - 350	383 - 467 - 550	467 - 567 - 667	492 - 592 - 700
		cfm	477 - 565 - 671	512 - 636 - 742	512 - 636 - 742	812 - 989 - 1,165	989 - 1,254 - 1,412	1,042 - 1,254 - 1,483
External static pressure *4	Pa	<35> - 50 - <70> - <100> - <150>	<35> - 50 - <70> - <100> - <150>	<35> - 50 - <70> - <100> - <150>	<35> - 50 - <70> - <100> - <150>	<35> - 50 - <70> - <100> - <150>	<35> - 50 - <70> - <100> - <150>	
Motor	Type	DC motor						
	Output kW	0.121	0.121	0.121	0.244	0.244	0.244	
Air filter		PP honeycomb fabric.						
Refrigerant pipe diameter	Liquid (R410A) (R22,R407C) mm(in.)	9.52 (3/8) Brazed	9.52 (3/8) Brazed	9.52 (3/8) Brazed	9.52 (3/8) Brazed	9.52 (3/8) Brazed	9.52 (3/8) Brazed	
	Gas (R410A) (R22,R407C) mm(in.)	15.88 (5/8) Brazed	15.88 (5/8) Brazed	15.88 (5/8) Brazed	15.88 (5/8) Brazed	15.88 (5/8) Brazed	15.88 (5/8) Brazed	
Field drain pipe diameter		mm(in.)	O.D.32 (1-1/4)	O.D.32 (1-1/4)	O.D.32 (1-1/4)	O.D.32 (1-1/4)	O.D.32 (1-1/4)	
Sound pressure level (measured in anechoic room)								
(Low-Mid-High) *3	*5	dB(A)	29-32-36	30-34-38	30-34-38	32-37-41	35-40-44	
	*6	dB(A)	25-29-33	26-29-34	26-29-34	28-33-37	32-36-40	

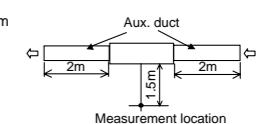
Notes:

- * [] is in case of PEFY-P VMAL-E
- *1 Nominal cooling conditions
Indoor: 27°CDB/19°CWB(81°FDB/66°FWB), Outdoor: 35°CDB(95°FDB)
Pipe length: 7.5m(24-9/16ft.), Level difference: 0m(0ft.)
- *2 Nominal heating conditions
Indoor: 20°CDB(68°FDB), Outdoor: 7°CDB(45°FDB)
Pipe length: 7.5m(24-9/16ft.), Level difference: 0m(0ft.)
- *3 The values are measured at the rated external static pressure.
- *4 The rated external static pressure is shown without <>.The factory setting is the rated value.

- *5 Measured in anechoic room with a 1m air inlet duct and 2m air outlet duct attached to the unit and 1.5m below the unit.



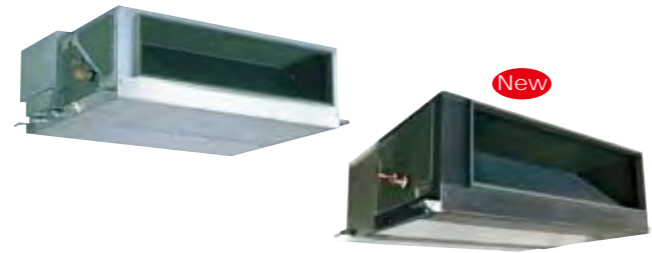
- *6 Measured in anechoic room with a 2m air inlet duct and 2m air outlet duct attached to the unit and 1.5m below the unit.



INDOOR UNIT Ceiling concealed type

PEFY-P VMH(S)-E

High Static Pressure



Increased design flexibility from sufficient external static pressure allows authentic duct air-conditioning with an elegant interior layout.



High static pressure of 200 Pa or higher

The additional external static pressure capacity provides flexibility for duct extension, branching and air outlet configuration.

PEFY-P VMH-E	P40	P50	P63	P71	P80	P100	P125	P140	P200	P250	
External static pressure (Pa)	220V	50/100/200								—	—
	230/240V	100/150/200								—	—
	380V	—								110/220	—
	400/415V	—								—	130/260

PEFY-P VMHS-E	P200	P250
External static pressure (Pa)	<50> - <100> - 150 - <200> - <250>*	—

*The rated external static pressure is shown without < >.
The factory setting is the rated value.

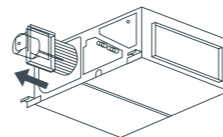
Reduced noise thanks to the use of newly designed centrifugal fan

Sound pressure level table (Standard static pressure 220V)

Sound pressure Level	Capacity	Fan Speed	dB(A)								
			P40	P50	P63	P71	P80	P100	P125	P140	
High	Low	High	34	34	38	39	41	42	42	42	
		Low	27	27	32	32	35	34	34	34	

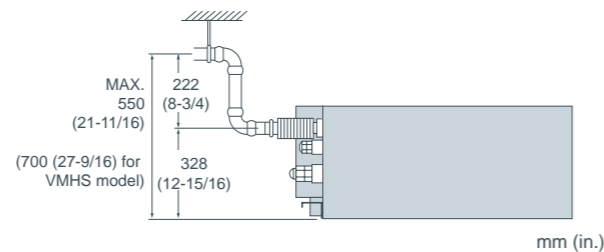
One-side maintenance

All maintenance to the unit, including fan inspection and fan motor removal, can be conducted from the inspection opening on one side. (VMH model only)



Drain pump (option) ensures up to 550mm (21-11/16in.) for VMH model / 700mm (27-9/16in.) for VMHS model of lift

The introduction of an upper drain pump allows the drain connection to be raised as high as 550mm(21-11/16in.) for VMH model/700mm (27-9/16in.) for VMHS model, allowing more freedom in piping layout design and reducing horizontal piping requirements.



Specifications

		PEFY-P40VMH-E	PEFY-P50VMH-E	PEFY-P63VMH-E	PEFY-P71VMH-E	PEFY-P80VMH-E	PEFY-P100VMH-E	PEFY-P125VMH-E	PEFY-P140VMH-E		
Power source		1-phase 220-240V 50Hz / 1-phase 220-240V 60Hz									
Cooling capacity	*1 kW	4.5	5.6	7.1	8.0	9.0	11.2	14.0	16.0		
	*1 BTU/h	15,400	19,100	24,200	27,300	30,700	38,200	47,800	54,600		
Heating capacity	*1 kW	5.0	6.3	8.0	9.0	10.0	12.5	16.0	18.0		
	*1 BTU/h	17,100	21,500	27,300	30,700	34,100	42,700	54,600	61,400		
Power consumption	Cooling kW	0.19 / 0.23		0.24 / 0.30	0.26 / 0.33	0.32 / 0.40	0.48 / 0.58		0.48 / 0.59		
	Heating kW	0.19 / 0.23		0.24 / 0.30	0.26 / 0.33	0.32 / 0.40	0.48 / 0.58		0.48 / 0.59		
Current	Cooling A	0.88 / 1.06		1.12 / 1.38	1.20 / 1.51	1.47 / 1.83	2.34 / 2.66		2.35 / 2.70		
	Heating A	0.88 / 1.06		1.12 / 1.38	1.20 / 1.51	1.47 / 1.83	2.34 / 2.66		2.35 / 2.70		
External finish		Galvanized									
Dimension H x W x D	mm	380 x 750 x 900			380 x 1,000 x 900			380 x 1,200 x 900			
	in.	15 x 29-9/16 x 35-7/16			15 x 39-3/8 x 35-7/16			15 x 47-1/4 x 35-7/16			
Net weight		kg(lbs.)	44 (98)	45 (100)	50 (111)			70 (155)			
Heat exchanger		Cross fin (Aluminum plate fin and copper tube)									
Fan	Type x Quantity		Sirocco fan x 1			Sirocco fan x 2			Sirocco fan x 2		
	Airflow rate (Lo-Hi)	m ³ /min	10.0-14.0		13.5-19.0	15.5-22.0	18.0-25.0	26.5-38.0		28.0-40.0	
		L/s	167-233		225-317	258-367	300-417	442-633		467-667	
		cfm	353-494		477-671	547-777	636-883	936-1342		989-1413	
External static pressure *2	220V Pa	50 · 100 · 200									
	230,240V Pa	100 · 150 · 200									
Motor		1-phase induction motor									
Output *3		kW	0.08	0.12	0.14	0.18	0.26				
Air filter (option)		Synthetic fiber unwoven cloth filter (long life)									
Refrigerant pipe diameter	Gas (Brazing) mm(in.)	ø12.7 (ø1/2)			ø15.88 (ø5/8)						
	Liquid (Brazing) mm(in.)	ø6.35 (ø1/4)			ø9.52 (ø3/8)						
Field drain pipe diameter		mm(in.) O.D. 32 (1-1/4)									
Sound pressure level (Lo-Hi) *6	220V dB(A)	27-34		32-38	32-39	35-41	34-42				
	230,240V dB(A)	31-37		36-41	35-41	38-43	38-44				

		PEFY-P200VMH-E	PEFY-P250VMH-E	PEFY-P200VMHS-E	PEFY-P250VMHS-E	
Power source		3-phase 380-415V 50Hz / 3N ~ 380-415V 60Hz		1-phase 220-240V 50Hz / 1-phase 220-240V 60Hz		
Cooling capacity	*1 kW	22.4	28.0	22.4	28.0	
	*1 BTU/h	76,400	95,500	76,400	95,500	
Heating capacity	*1 kW	25.0	31.5	25.0	31.5	
	*1 BTU/h	85,300	107,500	85,300	107,500	
Power consumption	Cooling kW	0.99 / 1.14	1.23 / 1.41	0.63 *7	0.82 *7	
	Heating kW	0.99 / 1.14	1.23 / 1.41	0.63 *7	0.82 *7	
Current	Cooling 380-415V A	1.62 / 1.86	2.00 / 2.30	—	—	
	220-230-240V A	—	—	3.47-3.32-3.18 *7	4.72-4.43-4.14 *7	
Heating 380-415V A	1.62 / 1.86	2.00 / 2.30	—	—		
	220-230-240V A	—	—	3.47-3.32-3.18 *7	4.72-4.43-4.14 *7	
External finish		Galvanized		Galvanized steel plate		
Dimension H x W x D	mm	470 x 1,250 x 1,120		470 x 1,250 x 1,120		
	in.	18-9/16 x 49-1/4 x 44-1/8		18-9/16 x 49-1/4 x 44-1/8		
Net weight		kg(lbs.) 100 (221)		97 (214) 100 (221)		
Heat exchanger		Cross fin (Aluminum plate fin and copper tube)		Cross fin (Aluminum plate fin and copper tube)		
Fan	Type x Quantity		Sirocco fan x 2		Sirocco fan x 2	
	Airflow rate	m ³ /min	58.0	72.0	—	—
		L/s	967	1200	—	—
		cfm	2048	2543	—	—
Lo-Mid-Hi	m ³ /min	—	—	50.0-61.0-72.0	58.0-71.0-84.0	
	L/s	—	—	833-1017-1200	967-1183-1400	
	cfm	—	—	1766-2154-2542	2048-2507-2966	
External static pressure	380V Pa	110 · 220 *4		—		
	400,415V Pa	130 · 260 *4		—		
	Pa	—		<50>-<100>-150-<200>-<250> *8		
	mmH ₂ O	—		<5.1>-<10.2>-15.3-<20.4>-<25.5> *8		
Motor		3-phase induction motor		DC motor		
Output		kW	0.76 *5 1.08 *5	0.87	0.87	
Air filter (option)		Synthetic fiber unwoven cloth filter (long life)		Synthetic fiber unwoven cloth filter (long life filter) and filter box are recommended.		
Refrigerant pipe diameter	Gas (Brazing) mm(in.)	ø19.05 (ø3/4)		ø19.05 (ø3/4) ø22.2 (ø7/8)		
	Liquid (Brazing) mm(in.)	ø9.52 (ø3/8)		ø9.52 (ø3/8)		
Field drain pipe diameter		mm(in.) O.D. 32 (1-1/4)				
Sound pressure level	380V dB(A)	42 (110Pa) / 45 (220Pa) *6		50 (110Pa) / 52 (220Pa) *6		
	400,415V dB(A)	44 (130Pa) / 47 (260Pa) *6		—		
	Lo-Mid-Hi dB(A)	—		36-39-43 *9 39-42-46 *9		

Notes:

- *1 Cooling/heating capacity indicates the maximum value at operation under the following condition.
Cooling Indoor : 27°C(81°F)DB/19°C(66°F)WB, Outdoor : 35°C(95°F)DB
Heating Indoor : 20°C(68°F)DB, Outdoor : 7°C(45°F)DB/6°C(43°F)WB
- *2 The external static pressure is set to 100Pa (at 220V) /150Pa (at 230, 240V) at factory shipment.
- *3 The value are that at 240V.
- *4 The external static pressure is set to 220Pa (at 380V) /260Pa (at 400, 415V) at factory shipment.
- *5 The value are that at 415V.

- *6 It is measured in anechoic room.
- *7 The values are measured at the rated external static pressure.
- *8 The rated external static pressure is shown without < >.
The factory setting is the rated value.
- *9 It is measured at the rated external static pressure in anechoic room.

INDOOR UNIT Fresh Air Intake Type

PEFY-P VMH-E-F

Fresh Air Intake

Fresh Air can be taken in with temperature control.
Ideal for Offices, Stores and Restaurants.

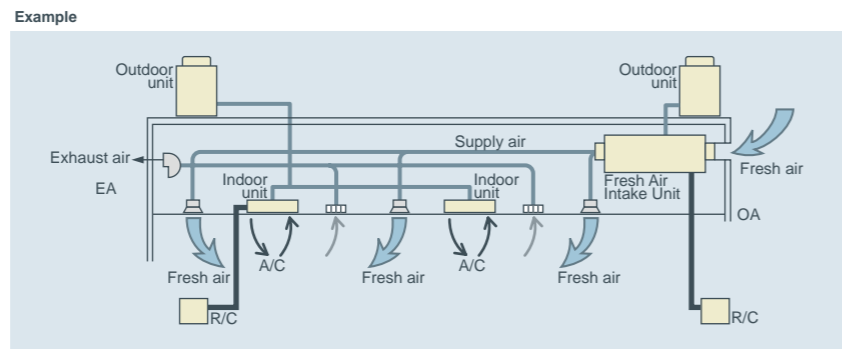


The Fresh Air intake indoor unit can be installed in any place.

The Fresh Air intake indoor unit can take fresh outdoor air into any building in any place at any time.

Office, Lobby, Workshop, Rest room, Nursing home, Smoking corner, Kitchen in restaurant

* Limits of capacity connectable to outdoor unit
Max. 110% of outdoor unit capacity, excepting heating at outdoor temperature of less than -5°C(23°F) (100%).



< Note >
Fan remains in operation during Thermo-OFF. Using this model with other type of indoor unit is recommended to prevent cold draft which is caused due to intaken fresh air.

Specifications

		PEFY-P80VMH-E-F		PEFY-P140VMH-E-F	
Power source		1-phase 220-240V 50Hz / 1-phase 208-230V 60Hz			
Cooling capacity	*1 kW	9.0		16.0	
	*1 BTU/h	30,700		54,600	
Heating capacity	*1 kW	8.5		15.1	
	*1 BTU/h	29,000		51,500	
Power consumption	Cooling kW	0.16 / 0.21		0.29 / 0.33	
	Heating kW	0.16 / 0.21		0.29 / 0.33	
Current	Cooling A	0.67 / 0.91		1.24 / 1.48	
	Heating A	0.67 / 0.91		1.24 / 1.48	
External finish		Galvanized			
Dimension H x W x D		mm(in.) 380 x 1000 x 900 (15 x 39-3/8 x 35-7/16)		380 x 1200 x 900 (15 x 47-1/4 x 35-7/16)	
Net weight		kg(lbs.) 50 (111)		70 (155)	
Heat exchanger		Cross fin (Aluminum plate fin and copper tube)			
Fan	Type x Quantity		Sirocco fan x 1		Sirocco fan x 2
	Airflow rate	m³/min	9.0		18.0
		L/s	150		300
		cfm	18		636
	External static pressure (Lo-Mid-Hi)	208V Pa	35 - 85 - 170		35 - 85 - 170
220V Pa		40 - 115 - 190		50 - 115 - 190	
230V Pa		50 - 130 - 210		60 - 130 - 220	
240V Pa		80 - 170 - 220		100 - 170 - 240	
Motor	Type	1-phase induction motor			
	Output kW	0.09 (at 220V)		0.14 (at 220V)	
Air filter (option)		Synthetic fiber unwoven cloth filter (long life)			
Refrigerant pipe diameter	Gas (Flare) mm(in.)	ø15.88 (ø5/8)			
	Liquid (Flare) mm(in.)	ø9.52 (ø3/8)			
Field drain pipe diameter		mm(in.) O.D.32 (1-1/4)			
Sound pressure level (Lo-Mid-Hi) *2	208, 220V dB(A)	27 - 38 - 43		28 - 38 - 43	
	230, 240V dB(A)	33 - 43 - 45		34 - 43 - 45	

		PEFY-P200VMH-E-F		PEFY-P250 VMH-E-F	
Power source		3-phase 380-415V 50Hz / 3N- 380-415V 60Hz			
Cooling capacity	kW	22.4		28.0	
	BTU/h	76,400		95,500	
Heating capacity	kW	21.2		26.5	
	BTU/h	72,300		90,400	
Power consumption	Cooling kW	0.34 / 0.42		0.39 / 0.50	
	Heating kW	0.34 / 0.42		0.39 / 0.50	
Current	Cooling A	0.58 / 0.74		0.68 / 0.86	
	Heating A	0.58 / 0.74		0.68 / 0.86	
External finish		Galvanized			
Dimension H x W x D		mm(in.) 470 x 1250 x 1120 (18-9/16 x 49-1/4 x 44-1/8)			
Net weight		kg(lbs.) 100 (221)			
Heat exchanger		Cross fin (Aluminum plate fin and copper tube)			
Fan	Type x Quantity		Sirocco fan x 2		35
	Airflow rate	m³/min	28		35
		L/s	467		583
		cfm	989		1236
	External static pressure	380V Pa	140 / 200		110 / 190
400V Pa		150 / 210		120 / 200	
415V Pa		160 / 220		130 / 210	
Type		3-phase induction motor			
Motor	Output kW	0.20		0.23	
	Air filter (option)		Synthetic fiber unwoven cloth filter (long life type)		
Refrigerant pipe diameter	Gas (Flare) mm(in.)	ø19.05 (ø3/4)		ø22.2 (ø7/8)	
	Liquid (Flare) mm(in.)	ø9.52 (ø3/8)			
Field drain pipe diameter		mm(in.) O.D.32 (1-1/4)			
Sound pressure level *2	380V dB(A)	39 / 42		40 / 44	
	400V dB(A)	40 / 43		40 / 45	
	415V dB(A)	40 / 44		41 / 46	

Notes:

- The cooling and heating capacities are the maximum capacities that were obtained by operating in the above air conditions and with a refrigerant pipe of about 7.5m.
- The actual capacity characteristics vary with the combination of indoor and outdoor units. See the technical information.
- The operating noise is the data that was obtained by measuring it 1.5m from the bottom of the unit in an anechoic room. (Noise meter A-scale value)
- The figure of Electrical characteristic indicates at 240V 50Hz/230V/60Hz (PEFY-P80, 140VMH-E-F type), at 220Pa setting at 415V (PEFY-P200, 250VMH-E-F type).
- When the 100% fresh air indoor units are connected, the maximum connectable outdoor units to 1 outdoor unit are as follows

Heat pump models	Cooling only
110%(100% in case of heating below-5°C(23°F))	110%

- Operational temp range is (Cooling : from 21°C(70°F)DB/15.5°C(60°F)WB to 43°C(109°F)DB/35°C(95°F)WB)
(Heating : from -10°C(14°F)DB to 20°C(68°F)DB)

- Thermo off(Fan) operation automatically starts either when temperature is lower than 21°C(70°F)DB in cooling mode or when the temperature exceeds 20°C(68°F)DB in heating mode.
- As the room temp in sensed by the thermo in the remote controller or the one in the room, be sure to use either remote controller or room thermo.
- Autochangeover function or Dry mode is NOT available. Fan mode operation during the thermo off in Cooling/Heating mode.
- In any case, the air flow rate should be kept lower than 110% of the above chart. Please see "Fan curves" for the details.
- When this unit is used as sole A/C system, be careful about the dew in air outlet grilles in cooling mode.
- Un-conditioned outdoor air such as humid air or cold air blows to the indoor during thermo off operation. Please be careful when positioning indoor unit air outlet grilles, to take the necessary precautions for cold air, and also insulate rooms for dew condensation prevention as required.
- Air filter must be installed in the air intake side. The filter should be attached where easy maintenance is possible in case of usage of field supply filters.
- Long life cannot be used with Hi-efficiency filter together (PEFY-P80 - 140VMH-E-F type).